

## **Add-Enough™ Never cut short again!**

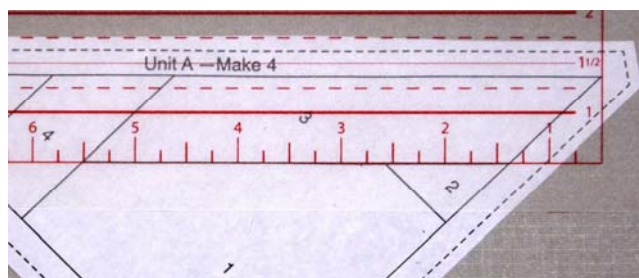
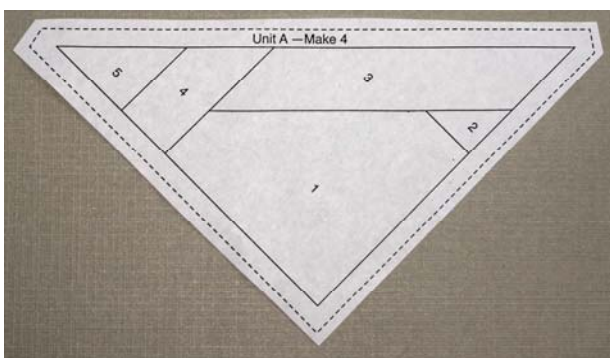
The Add-Enough™ is designed to help determine how big to cut fabric pieces when paper piecing. Simply follow the directions for cutting squares, rectangles and half-square triangles. Cut one piece to make sure enough fabric has been allowed, and then cut the remaining pieces.

### **Squares and Rectangles:**

Place the Add-Enough™ on the paper piecing pattern. Match up the solid lines on the right and bottom line of the ruler with the lines on the right and bottom of the square or rectangle of the next piece you are going to sew. Follow along the side of the ruler, measure to the next  $\frac{1}{4}$  inch, then add another  $\frac{1}{4}$  inch. It is better to have too much fabric than not enough so always round up your measurements. Be sure to include all seam allowances.

### **Odd Sizes:**

To determine the size to cut for an odd shape, place the Add-Enough™ on the pattern piece. Line up the bottom line of the ruler with the bottom line of the next piece to be sewn. Adjust the Add-Enough™ to the right. The right line will then line up with the edge of the odd shape. Follow the directions for a rectangle to cut the correct size.

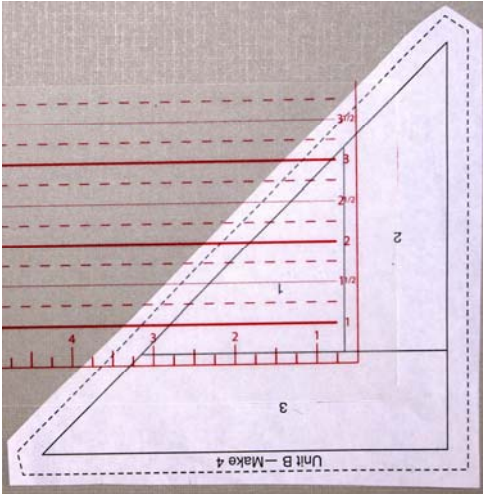


Placement of the Add-Enough™

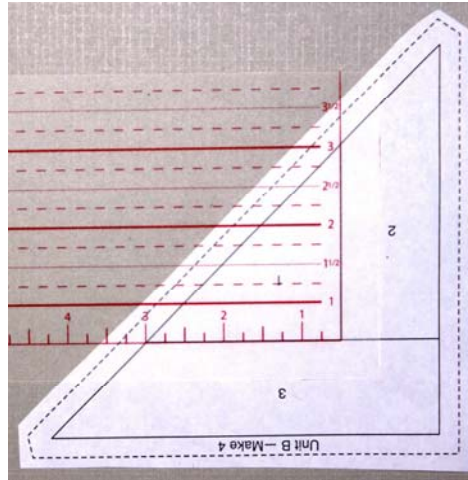
Measure piece #3.

### **Half-Square Triangles:**

Measure the adjacent or opposite side of the angle to make a half-square triangle. Do not use the hypotenuse (the side directly across from the  $90^\circ$  angle, which is the longest side of a right triangle). Place the right angle of the Add-Enough™ (lower right corner) at the point of the  $90^\circ$  angle of the half-square triangle that is being measured. Add  $\frac{3}{4}$  inch to that measurement to give the square size. Cut the square in half on the diagonal.



Place Add-Enough™ at the 90° point.



Measure; add  $\frac{3}{4}$ " to get a square.

When paper piecing, the Add-Enough™ may also be used in place of a postcard or template plastic to trim off the excess fabric. Place it on the line between piece number 1 and piece number 2. Fold back the foundation pattern over the edge of the Add-Enough™. Place the Add-A-Quarter™ up against the fold of the foundation paper with the lip side down. Use the rotary cutter to trim the extra fabric from piece number 1. Place fabric piece number 2 on the straight line.

© Carolyn Cullinan McCormick 2007